

# SERVICE INFORMATION

altek International Ltd  
The Office  
Timaru Farm  
Barton Road  
Elsham, Brigg  
North Lincolnshire  
England  
DN20 0LS.  
Tel + 44 (0)1652 688 889  
[info@altekinternational.com](mailto:info@altekinternational.com)  
[www.altekinternational.com](http://www.altekinternational.com)

Date: 08/10/2014

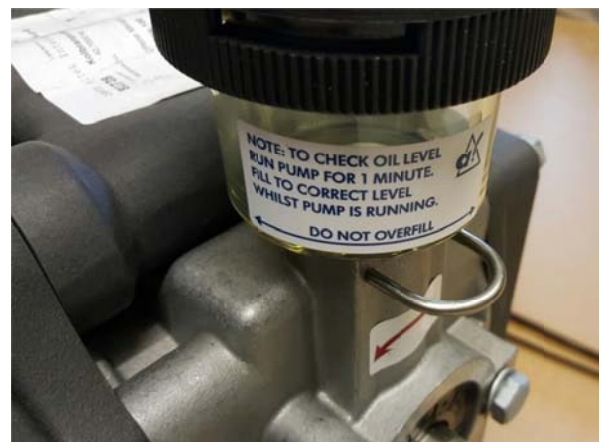
Subject: **Pump Oil: Checking Level / Changing**

## LEVEL CHECKING

If the pump has been stopped for some time it is not unusual that the reservoir is empty. To prevent overfilling oil should **NOT** be added at this point.

Checking that the pump has the correct level should be carried out after the pump is running for minimum of 1 minute.

If no oil is seen in the reservoir after 1 minute running oil can be added by removal of the reservoir cover. **DO NOT OVERFILL.**



## CHANGING OIL

The pump can be drained by removing both front and rear drain plugs (fig1). This is very important to ensure all oil is removed from the pump. Failure to do so will cause contamination of the new oil.

Removal of the reservoir cap and the vent plug (fig 2) will speed up the draining of the old oil.

Before refilling ensure both drain plugs (fig1) are refitted using new sealing washers.

The pump can be refilled through the reservoir (fig 2). Leaving the vent plug (fig2) out to prevent air lock. When oil appears through the vent port the pump is full.

The vent plug and reservoir cap (fig 2) should be replaced and the pump should now be run and the level checked as above.

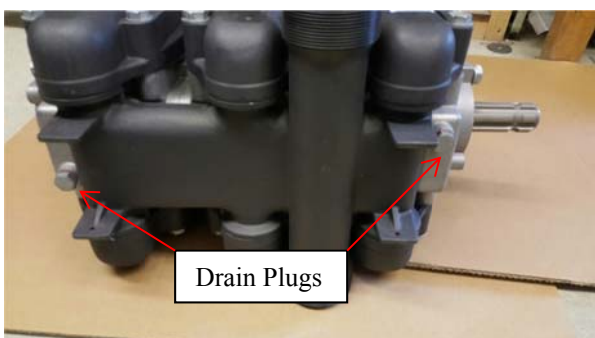


Fig 1

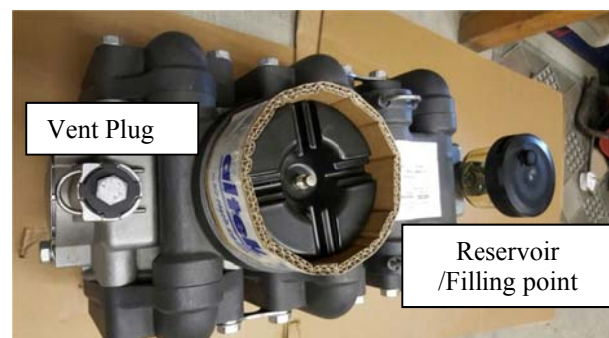


Fig 2